



شركة محمد أحمد الحرفي  
Mohammed A. Al-Harfi  
للمقاولات CONSTRUCTION



[www.mah-sa.com](http://www.mah-sa.com)






شركة محمد أحمد الحرفي  
Mohammed A. Al-Harfi  
للمقاولات CONSTRUCTION



[www.mah-sa.com](http://www.mah-sa.com)

 [info@mah-sa.com](mailto:info@mah-sa.com)

 +966112207895

Kingdom of Saudi Arabia, Riyadh, 4147 Al Ghadeer Dist., 8646  
King Abdulaziz Rd, Postal Code. 13311





## CEO Message

At MAH, we are dedicated to create more than just structures - we build trust, value, and long-term partnerships.

From our first project to our most recent landmark, our journey has been guided by a deep commitment to quality, safety, and innovation.

Every foundation we lay and every detail we perfect reflect our belief that true success lies in exceeding our clients' expectations while contributing to the growth of our communities.

We continue to expand our capabilities, empower our people, and embrace new technologies - ensuring that MAH remains a symbol of reliability and excellence in the construction industry.



**Mohammed Al-Harfi**

Chief Executive Officer





# Board Members

Our Board Members bring together decades of experience in engineering, construction management, finance, and business development - guiding the company toward sustainable success and excellence in the Saudi construction sector.



Mr. Mishal Alsakka



Eng. Hesham Al-Falah



Mr. Ahmed Salim



Mr. Ibrahim Al-Amir



Eng. Mohammad Hamed



Mr. Sameh Saad



Mr. Waseem Emam





# Overview

As one of the fast-growing and dynamic contracting companies in the Kingdom of Saudi Arabia, Mohammed A. Al-Harfi Construction (MAH) is firmly committed to achieving its strategic objectives and establishing itself among the leading firms in the Kingdom's rapidly evolving construction sector.

Through the dedication of our professional teams and the strength of our partnerships and affiliates, MAH has successfully executed numerous projects with exceptional quality and robust financial performance. This success is driven by our adoption of modern management methodologies, digital tools, and performance-driven operational models that enhance efficiency and ensure client satisfaction.



Our deep understanding of the local market, combined with our alignment with Saudi Vision 2030 and the National Transformation Program (NTP), positions MAH at the forefront of the Kingdom's development journey. We are proactively engaging in emerging Giga-Projects and national infrastructure initiatives, contributing to the transformation of Saudi Arabia's urban, industrial, and economic landscape.

With a forward-looking strategy, a solid foundation of technical expertise, and a commitment to excellence, MAH continues to build the future of construction—delivering value, innovation, and sustainability in every project





## Our Mission

To deliver vital and strategic projects that embody engineering excellence and ensure absolute client satisfaction. We are committed to achieving this through our professional management systems, skilled workforce, and a safety-first culture that promotes quality, integrity, and innovation in every aspect of our work.



## Our Vision

To be recognized as one of the Kingdom's most robust, trusted, and forward-thinking construction companies — setting new benchmarks of quality, innovation, and sustainability within the construction and urban development sector, in alignment with Saudi Vision 2030.





# Our Values

## STRIVE FOR EXCELLENCE



We relentlessly pursue excellence by embracing modern technologies, implementing world-class safety and quality standards, and continuously improving our performance to exceed industry expectations.

## TAKE CARE OF OUR CUSTOMERS



We build long-term partnerships based on trust, reliability, and results. By understanding our clients' goals and expectations, we deliver tailored solutions that ensure their success and satisfaction.

## CARE ABOUT OUR COMMUNITY



We are deeply committed to the welfare of our employees, partners, and the communities in which we operate. We uphold environmental responsibility and contribute positively to the sustainable growth of our society.

## WORK WITH TRANSPARENCY



We operate with integrity, accountability, and respect for laws and regulations. Our transparency in communication and ethical business conduct form the foundation of our professional relationships and reputation.





## Our Partners

## CLIENTS

 <p>شركة المياه الوطنية National Water Company</p>	 <p>هيئة الزكاة والضريبة والجمارك Zakat, Tax and Customs Authority</p>	 <p>وزارة البلديات والإسكان Ministry of Municipalities and Housing</p>	 <p>وزارة الطاقة MINISTRY OF ENERGY</p>	 <p>أمانة العاصمة المقدسة HOLY MAKKAH MUNICIPALITY</p>
 <p>وزارة التعليم Ministry of Education</p>	 <p>أرامكو السعودية Saudi Aramco</p>	 <p>المؤسسة العامة للتدريب التقني والمهني Technical and Vocational Training Corporation</p>	 <p>الهيئة العامة للصناعات العسكرية General Authority for Military Industries</p>	 <p>نيوم NEOM</p>
 <p>وزارة الدفاع MINISTRY OF DEFENSE</p>	 <p>مدن MODON</p>	 <p>BEC العربية ARABIA</p>	 <p>جامعة طيبة TAIBAH UNIVERSITY</p>	
 <p>شركة العليا OLAYA COMPANY</p>	 <p>أحسترا extra</p>	 <p>تحرير Tahreez</p>	 <p>webuild</p>	 <p>المؤسسة العامة للري Saudi Irrigation Organization المملكة العربية السعودية</p>





## Our Partners

## CONSULTANT

**AECOM**

بيت الخبرة  
للإستشارات  
الهندسية  
Boyt Alkhbro for Engineering Consultants



**dar**

خطيب وعلمي  
Khatib & Alami



عمرانية Omrania  
egis  
GROUP



سعود كونسولت  
SAUDCONSULT

**Jacobs**

الباردة YARD  
CONSULTING ENGINEERS  
للاستشارات الهندسية



**LUCA DINI**  
DESIGN & ARCHITECTURE

FOUAD AL SALEH  
& KHALED AL DHOWALIA Co.  
ENGINEERING CONSULTANTS







## Our Partners

## Suppliers & Manufacturers

**ABB**

الفنار  
alfanar

عوازل  
**AWAZEL**  
ARABIAN WATERPROOFING INDUSTRIES COMPANY  
شركة صناعات العوازل العربية

**BAHRA**  
ELECTREC

**BITUMAT**

**CMCI**  
Construction Material Chemical Industries

  
CONMARBLE

أنفال  
**Dalton**

**EATON**

بيت الكهرباء  
electric house

**FOSROC**  


  
**GRUNDFOS**

حديد الراجحي  
**RAJHI STEEL**

 **JOTUN**

**KSB** 





## Our Partners

## Suppliers & Manufacturers







# Our Services

Mohammed A. Al-Harfi Construction (MAH) delivers comprehensive Engineering, Procurement, and Construction (EPC) services, providing end-to-end solutions that ensure excellence, efficiency, and value throughout every project phase. In partnership with leading international consultants, MAH offers superior engineering studies, detailed designs, and fully approved IFC documentation, ensuring technical precision and adherence to the highest industry standards.



## Our core services include:

Engineering & Design: Advanced planning, design development, and value engineering.	Project Management Integrated control over cost, schedule, and quality performance.	Construction Full-spectrum execution across structure, civil, infrastructure, landscape & MEP disciplines.	Procurement: Strategic sourcing, quality assurance, and supply chain management.	Testing & Commissioning: System verification, compliance certification, and structured handover.
--	--	--	---	--

With a commitment to innovation, integrity, and quality, MAH continues to deliver projects that shape the Kingdom's modern infrastructure and support the vision of sustainable national development.





## Company Divisions



### GENERAL CONTRACTING

BUILDINGS Fit-Out



### INFRA STRUCTURE

WET & DRY UTILITIES



### ROADS



### RENEWABLE ENERGY

Solar  
PV Systems



### SPECIAL APPLICATIONS

Concrete repair and support, Ep-  
oxy Coating, Tanks Isolation, Spe-  
cial Membrane solutions,.. etc



### MEP

Mechanical - Electrical -  
Plumbing - Fire





## Company Projects

- Central Region 
- Northern Region 
- Western Region 
- Southern Region 
- Eastern Region 







# Organization Breakdown Structure - OBS







# Our Projects in Numbers



Building Projects

50

Ptojects

1000

Million Riyals



Infrastructure Projects

20

Ptojects

800

Million Riyals



Road Projects

5

Ptojects

200

Million Riyals



MEP

20

Ptojects

300

Million Riyals



Renewable Energy

3

Ptojects

1000

Million Riyals





## Affiliates



At Mohammed A. Al-Harfi Construction (MAH), we have built a strong and professional business network designed to meet the full spectrum of our clients' project requirements. Recognizing that technical expertise and specialized support are essential to the success of large-scale developments, we have established agile collaboration models with both local and international partners who share our commitment to quality and excellence.

While MAH maintains significant in-house engineering and management capabilities, we strategically collaborate with a network of expert consultants and specialized entities to deliver superior results. Our partners contribute to studies, design, project management (PMO), and specialized on-site works, ensuring that each project benefits from the highest level of technical proficiency and innovation.

These alliances enable us to deliver tailored solutions that enhance efficiency, reduce risk, and maintain consistency with the highest international standards of performance and safety.





## Supply-Chain

With extensive experience in delivering complex projects and deep knowledge of the Saudi Arabian construction market, MAH has developed a comprehensive and resilient supply chain that ensures timely and reliable material delivery to every project site.

We understand that the readiness and continuity of material supply are as vital as the projects themselves, and we have established a robust procurement system covering both short- and long-lead items. Our supply network encompasses raw materials, fabricated components, and specialized equipment sourced from trusted suppliers and manufacturers.

Through strong relationships with market-leading vendors and logistics partners, MAH ensures the seamless provision of construction materials, machinery, and equipment—whether directly through our procurement team or through specialized subcontractors—guaranteeing that every project milestone is achieved on schedule and to specification.





# QA/QC, Safety & Environmental Works

At Mohammed A. Al-Harfi Construction (MAH), we uphold the highest standards of quality, safety, and environmental stewardship across all stages of our projects. Our integrated Quality Assurance and Quality Control (QA/QC) system ensures that every activity—from material selection to final handover—complies with international standards, client specifications, and statutory requirements.



MAH implements rigorous inspection, testing, and documentation procedures designed to guarantee precision, durability, and compliance in every deliverable. Our commitment to continuous improvement drives us to adopt advanced tools and best practices for monitoring quality performance and eliminating deviations.

In parallel, our Health, Safety, and Environment (HSE) program is embedded within our corporate culture. We prioritize the well-being of our workforce and the protection of the environment through proactive risk assessments, preventive safety measures, and sustainable construction practices. This integrated management approach reflects our belief that quality, safety, and environmental responsibility are inseparable elements of professional excellence.





## Local Market Experiences

Through years of experience in the Saudi Arabian construction sector, MAH has developed a strong presence and a deep understanding of the local business landscape, regulatory framework, and governmental procedures.



We actively collaborate with local and international partners, providing them with a mature, reliable platform to conduct business seamlessly within the Kingdom. Our professional teams possess extensive experience in obtaining necessary licenses, permits, certifications, and registrations, ensuring that projects progress efficiently and in full compliance with national standards.

Beyond technical execution, we recognize the importance of administrative and regulatory coordination. Our management team has successfully worked with numerous government and semi-government entities, building trusted relationships and expediting approvals to support timely and effective project delivery.

By leveraging this extensive market knowledge, MAH ensures smooth project execution, operational excellence, and consistent alignment with the Kingdom's evolving development objectives under Vision 2030.



# MAH Projects



شركة محمد أحمد الحرفي  
Mohammed A. Al-Harfi  
للمقاولات  
CONSTRUCTION



GENERAL CONTRACTING



INFRA STRUCTURE



ROADS



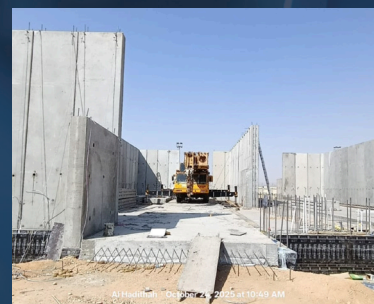
MEP



RENEWABLE ENERGY



SPECIAL APPLICATIONS





# InfraStructure Projects



شركة محمد أحمد الحرفي  
Mohammed A. Al-Harfi  
CONSTRUCTION للمقاولات



CHANNEL



NWC





# InfraStructure Projects



شركة محمد أحمد الحرفي  
Mohammed A. Al-Harfi  
CONSTRUCTION للمقاولات



CONTACT 18



NWC





# InfraStructure Projects



شركة محمد أحمد الحرفي  
Mohammed A. Al-Harfi  
CONSTRUCTION للمقاولات



DRINAGE & WATER SUPPLY



NWC





# InfraStructure Projects



شركة محمد أحمد الحرفي  
Mohammed A. Al-Harfi  
للمقاولات  
CONSTRUCTION



TAIF FRAME AGREEMENT



NWC



# Landscape Projects



شركة محمد أحمد الحرفي  
Mohammed A. Al-Harfi  
CONSTRUCTION للمقاولات



WATER SPORT CENTER - SINDALAH



NEOM





# Landscape Projects



شركة محمد أحمد الحرفي  
Mohammed A. Al-Harfi  
CONSTRUCTION للمقاولات



BEACH CLUB - SINDALAH



NEOM



# Landscape Projects



شركة محمد أحمد الحرفي  
Mohammed A. Al-Harfi  
CONSTRUCTION للمقاولات



GOLF CLUB - SINDALAH



NEOM





# Landscape Projects



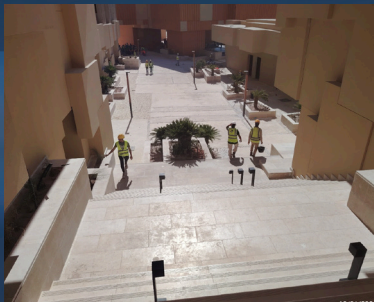
شركة محمد أحمد الحرفي  
Mohammed A. Al-Harfi  
CONSTRUCTION للمقاولات



CLUSTER - SINDALAH



NEOM





# Building Projects



شركة محمد أحمد الحرفي  
Mohammed A. Al-Harfi  
CONSTRUCTION للمقاولات



MEKKA HAJ PROJECTS



HOLY MAKKAH MUNICIPALITY



# Building Projects



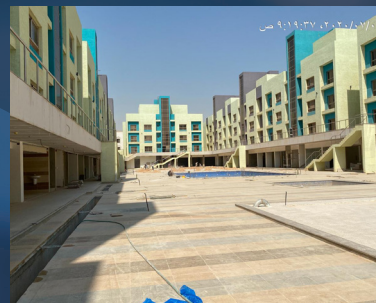
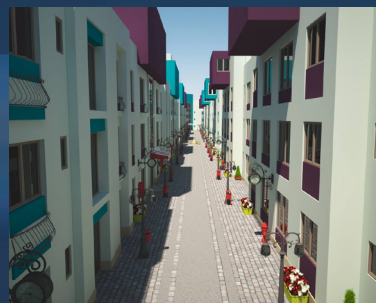
شركة محمد أحمد الحرفي  
Mohammed A. Al-Harfi  
CONSTRUCTION للمقاولات



ALIZDIHAR COMPOUND



OLAYA





# Building Projects



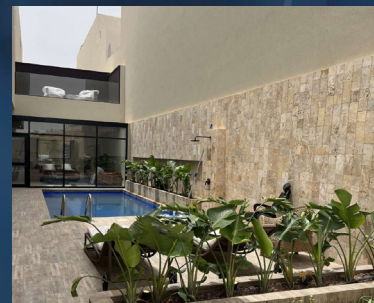
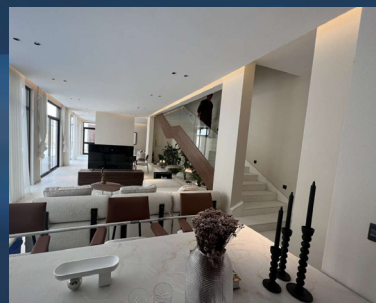
شركة محمد أحمد الحرفي  
Mohammed A. Al-Harfi  
CONSTRUCTION للمقاولات



VILLA HITTIN



PRIVATE





# Building Projects



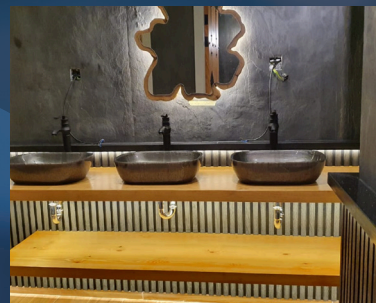
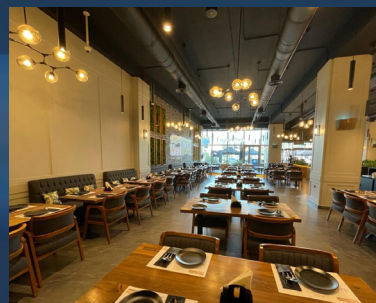
شركة محمد أحمد الحرفي  
Mohammed A. Al-Harfi  
CONSTRUCTION للمقاولات



MEAT MOOT RESTAURANT



DANA FOOD





# Building Projects



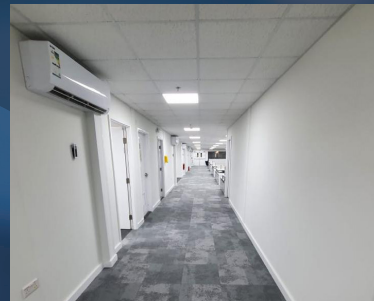
شركة محمد أحمد الحرفي  
Mohammed A. Al-Harfi  
CONSTRUCTION للمقاولات



NEOM OFFICES



NEOM





# Building Projects



شركة محمد أحمد الحرفي  
Mohammed A. Al-Harfi  
CONSTRUCTION للمقاولات



OLAYA MALL



OLAYA





# Building Projects



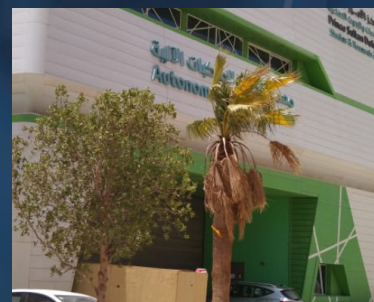
شركة محمد أحمد الحرفي  
Mohammed A. Al-Harfi  
CONSTRUCTION للمقاولات



PRINCE SULTAN DEFENSE STUDIES AND  
RESEARCH CENTER



DEFENSE MINISTRY





# Building Projects



شركة محمد أحمد الحرفي  
Mohammed A. Al-Harfi  
CONSTRUCTION للمقاولات



XRAY PORTALS FRAMEWORK PROJECT



ZATCA - TAHREEZ





# MEP Projects



شركة محمد أحمد الحرفي  
Mohammed A. Al-Harfi  
CONSTRUCTION للمقاولات



TECHNICAL COLLEGES



TVTC



# Specialized Projects



شركة محمد أحمد الحرفي  
Mohammed A. Al-Harfi  
CONSTRUCTION للمقاولات



ASSORTED



NWC & EXTERA





# Qualifications / Certifications



**CLASS - A**

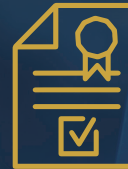
CITY PROVIDERS CLASSIFICATION

2024012845



SAUDI CONTRACTORS AUTHORITY

112411246



COMMERCIAL REGISTER

7004084245



VENDOR NO

10112494

أرامكو السعودية  
Saudi Aramco



ISO 45001: 2018

ISO 21500:2021

ISO 9001:2015

ISO 14001:2015





شركة محمد أحمد الحرفي  
Mohammed A. Al-Harfi

للمقاولات CONSTRUCTION



[www.mah-sa.com](http://www.mah-sa.com)